

**Anti-Bcl-6 Rabbit Monoclonal Antibody**  
**Catalog # ABO13598****Specification**

---

**Anti-Bcl-6 Rabbit Monoclonal Antibody - Product Information**

Application	WB, IHC, IF, ICC, IP
Primary Accession	<a href="#">P41182</a>
Host	Rabbit
Isotype	Rabbit IgG
Reactivity	Human
Clonality	Monoclonal
Format	Liquid

**Description**

Anti-Bcl-6 Rabbit Monoclonal Antibody . Tested in WB, IHC, ICC/IF, IP applications. This antibody reacts with Human.

**Anti-Bcl-6 Rabbit Monoclonal Antibody - Additional Information**

**Gene ID** 604

**Other Names**

B-cell lymphoma 6 protein, BCL-6, B-cell lymphoma 5 protein, BCL-5, Protein LAZ-3, Zinc finger and BTB domain-containing protein 27, Zinc finger protein 51, BCL6, BCL5, LAZ3, ZBTB27, ZNF51

**Calculated MW**

78846 MW KDa

**Application Details**

WB 1:500-1:2000<br>IHC 1:50-1:200<br>ICC/IF 1:50-1:200<br>IP 1:50

**Subcellular Localization**

Nucleus.

**Tissue Specificity**

Expressed in germinal center T- and B-cells and in primary immature dendritic cells..

**Contents**

Rabbit IgG in phosphate buffered saline, pH 7.4, 150mM NaCl, 0.02% sodium azide and 50% glycerol, 0.4-0.5mg/ml BSA.

**Immunogen**

A synthesized peptide derived from human Bcl6

**Purification**

Affinity-chromatography

**Storage**

**Store at -20°C for one year. For short term storage and frequent use, store at 4°C for up to one month. Avoid repeated**

freeze-thaw cycles.

## Anti-Bcl-6 Rabbit Monoclonal Antibody - Protein Information

**Name** BCL6

**Synonyms** BCL5, LAZ3, ZBTB27, ZNF51

### Function

Transcriptional repressor mainly required for germinal center (GC) formation and antibody affinity maturation which has different mechanisms of action specific to the lineage and biological functions. Forms complexes with different corepressors and histone deacetylases to repress the transcriptional expression of different subsets of target genes. Represses its target genes by binding directly to the DNA sequence 5'-TTCCTAGAA-3' (BCL6-binding site) or indirectly by repressing the transcriptional activity of transcription factors. In GC B-cells, represses genes that function in differentiation, inflammation, apoptosis and cell cycle control, also autoregulates its transcriptional expression and up-regulates, indirectly, the expression of some genes important for GC reactions, such as AICDA, through the repression of microRNAs expression, like miR155. An important function is to allow GC B-cells to proliferate very rapidly in response to T- cell dependent antigens and tolerate the physiological DNA breaks required for immunoglobulin class switch recombination and somatic hypermutation without inducing a p53/TP53-dependent apoptotic response. In follicular helper CD4(+) T-cells (T(FH) cells), promotes the expression of T(FH)-related genes but inhibits the differentiation of T(H)1, T(H)2 and T(H)17 cells. Also required for the establishment and maintenance of immunological memory for both T- and B-cells. Suppresses macrophage proliferation through competition with STAT5 for STAT- binding motifs binding on certain target genes, such as CCL2 and CCND2. In response to genotoxic stress, controls cell cycle arrest in GC B- cells in both p53/TP53-dependendent and -independent manners. Besides, also controls neurogenesis through the alteration of the composition of NOTCH-dependent transcriptional complexes at selective NOTCH targets, such as HES5, including the recruitment of the deacetylase SIRT1 and resulting in an epigenetic silencing leading to neuronal differentiation.

### Cellular Location

Nucleus

### Tissue Location

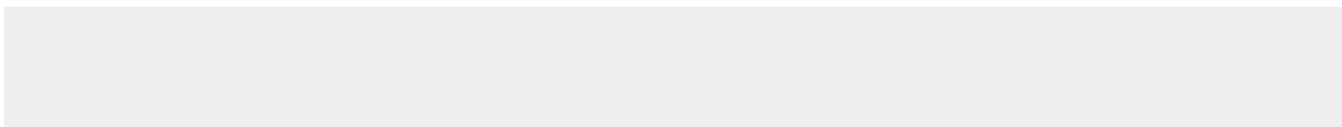
Expressed in germinal center T- and B-cells and in primary immature dendritic cells.

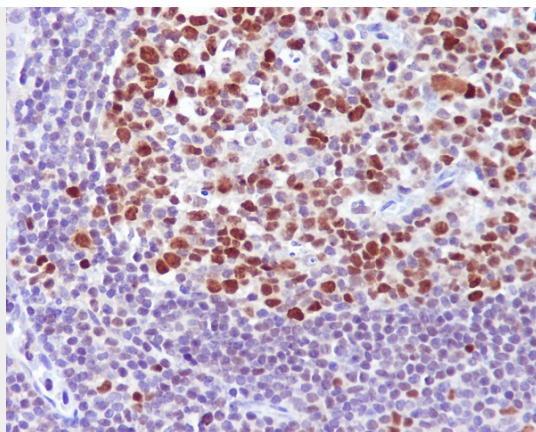
## Anti-Bcl-6 Rabbit Monoclonal Antibody - Protocols

Provided below are standard protocols that you may find useful for product applications.

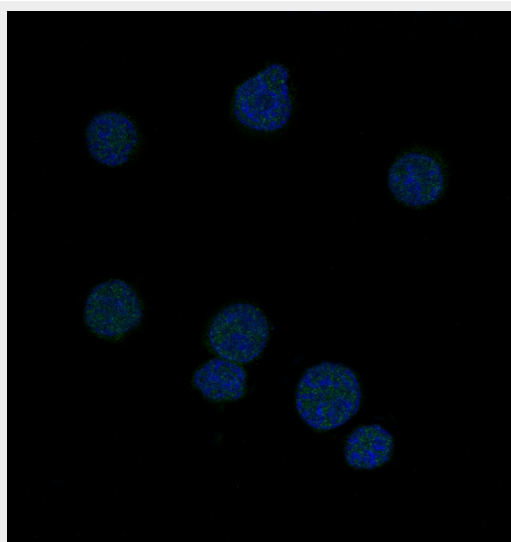
- [Western Blot](#)
- [Blocking Peptides](#)
- [Dot Blot](#)
- [Immunohistochemistry](#)
- [Immunofluorescence](#)
- [Immunoprecipitation](#)
- [Flow Cytometry](#)
- [Cell Culture](#)

## Anti-Bcl-6 Rabbit Monoclonal Antibody - Images





Immunohistochemical analysis of paraffin-embedded human tonsil, using Bcl-6 Antibody.



Immunofluorescent analysis of Ramos cells, using Bcl-6 Antibody .

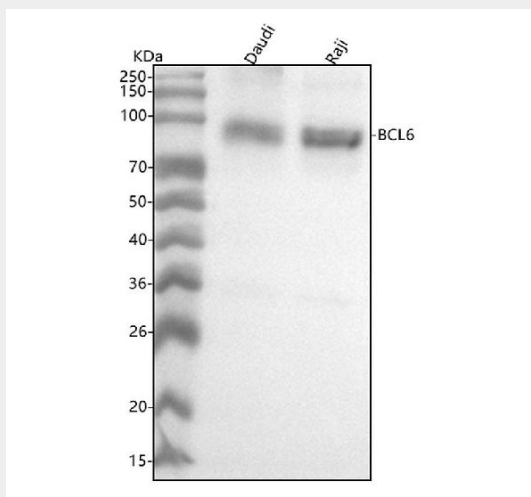


Figure 1. Western blot analysis of BCL6 using anti-BCL6 antibody (M00142-1). Electrophoresis was performed on a 5-20% SDS-PAGE gel at 70V (Stacking gel) / 90V (Resolving gel) for 2-3 hours. The sample well of each lane was loaded with 30 ug of sample under reducing conditions.

Lane 1: human Daudi whole cell lysates,  
Lane 2: human Raji whole cell lysates.

After electrophoresis, proteins were transferred to a nitrocellulose membrane at 150 mA for 50-90 minutes. Blocked the membrane with 5% non-fat milk/TBS for 1.5 hour at RT. The membrane was incubated with rabbit anti-BCL6 antigen affinity purified monoclonal antibody (Catalog # M00142-1) at 1:500 overnight at 4°C, then washed with TBS-0.1%Tween 3 times with 5 minutes each and probed with a goat anti-rabbit IgG-HRP secondary antibody at a dilution of 1:500 for 1.5 hour at RT. The signal is developed using an Enhanced Chemiluminescent detection (ECL) kit (Catalog # EK1002) with Tanon 5200 system. A specific band was detected for BCL6 at approximately 95 kDa. The expected band size for BCL6 is at 79 kDa.